

**CERTIFIED LAND CORNER RECORDATION**

**LOCATION**

31 | 32 T 20 N  
 5 | 4 T 19 N  
 R 66 W  
 6<sup>th</sup> P.M.

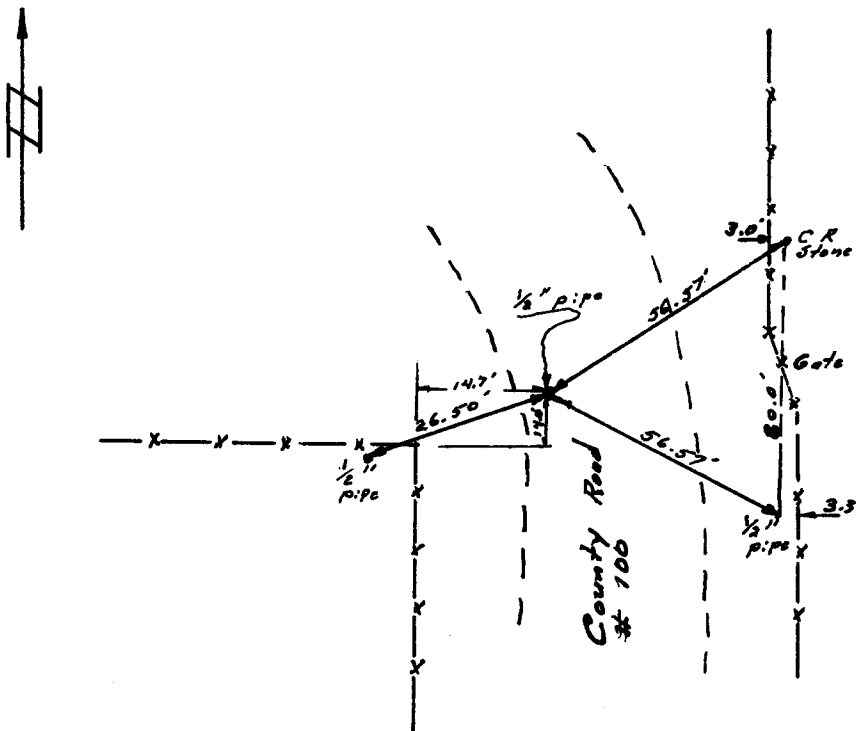
**DESCRIPTION OF CORNER EVIDENCE FOUND, AND ORIGINAL RECORD (if known)**  
 Found nothing at corner. Found CR stone to northeast.. Direction determined after much information gathered. County had no record of stone. Set 1/2" pipe at corner by occupying CR stone and sighting 40 feet east of southwest corner of section 4, and turning 45° angle, chain 56.57 feet.

G.L.O. record - sandstone 18" x 10" x 8".

**DESCRIPTION OF MONUMENT AND ACCESSORIES ESTABLISHED TO PERPETUATE THE ORIGINAL LOCATION OF THIS CORNER:**  
 Set 1/2" pipe at corner, 12" below surface of road.

Set 1/2" pipe to southwest and southeast, also used CR stone to northeast for witness corners. See sketch.

**SKETCH, WITH COURSE AND DISTANCE TO ADJACENT CORNER IF DETERMINED IN THIS SURVEY.**  
 (May Sketch or Paste Reproduction on Reverse Side.)



I, Robert C. Corbet certify that I have carefully performed or reviewed the work done on the diagrammed corner as reported on this recordation form and approve the same.

Robert C. Corbet LS 495  
 Signature of Surveyor Registration No.

STATE OF WYOMING,  
 Office of Clerk and Recorder,  
 County of Taramie

This "corner record" was filed for record on the 6 day of January, 1975, was noted on the cross-index plat and is assigned page No. \_\_\_\_\_, in book No. \_\_\_\_\_.

James C. Whitehead  
 County Official

Cross Index No. <u>A9</u>	T. <u>19</u>	R. <u>66</u>	<u>6</u> Mer.
_____	T. _____	R. _____	Mer.
_____	T. _____	R. _____	Mer.
_____	T. _____	R. _____	Mer.
_____	T. _____	R. _____	Mer.
_____	T. _____	R. _____	Mer.
_____	T. _____	R. _____	Mer.

Photographed

Indexed FB

Posted

Assessor

The State of Wyoming }  
County of Laramie }

This instrument was filed for record  
at 128 o'clock P M. on the  
6 day of January  
A. D. 19 19 and duly recorded in  
Book \_\_\_\_\_ on page \_\_\_\_\_

*James C. Mitchell*

County Clerk & Ex-Officio Registrar of Deeds  
FB  
Deputy

*FB*